

Model  
**2KS56**  
See reverse for custom models selection



**Specifications**

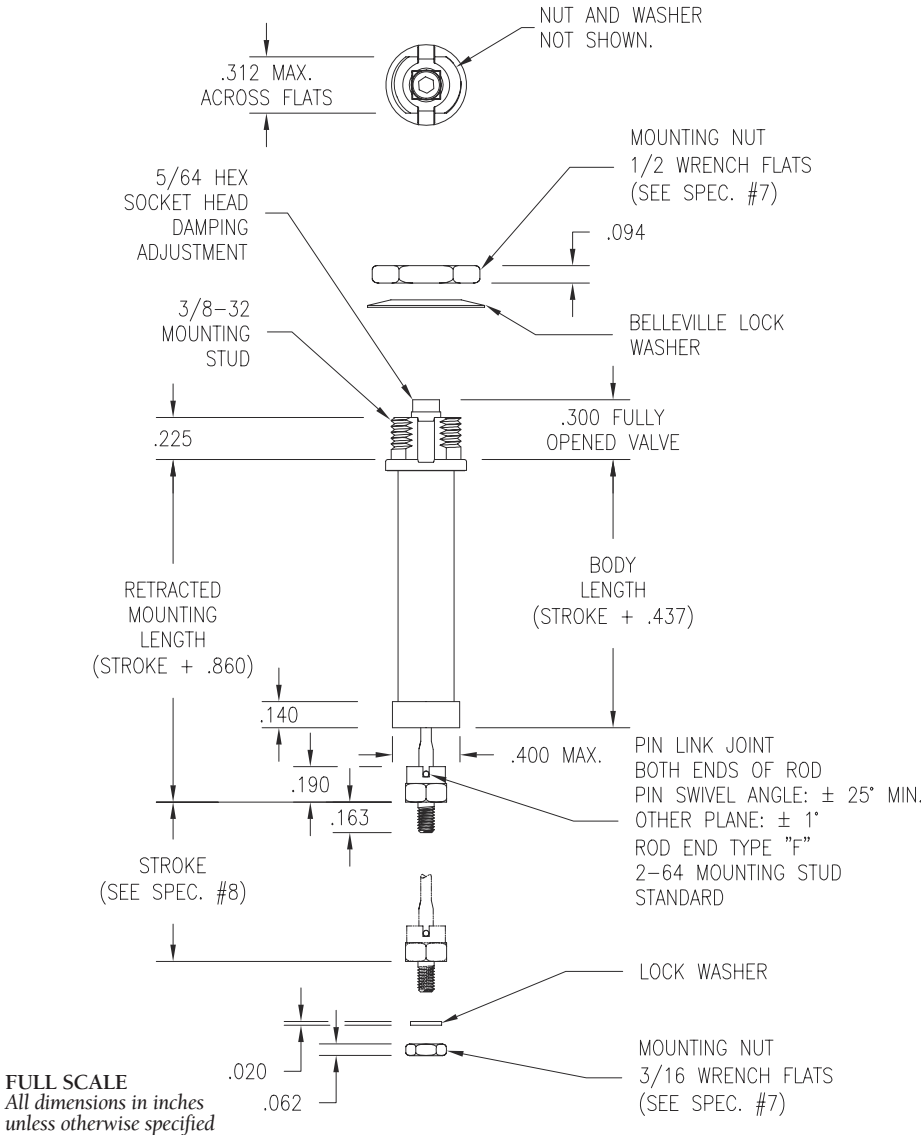
**Bore:** .220" (5.59 mm)

**PERFORMANCE**

- 1. Damping Coefficient**  
0–1.0 lb/(in/s) adjustable  
0–0.16 N/(mm/s)
- 2. Force Guidelines**  
Pull Damping: .50 lb max (2.22 N)  
Push Damping: .35 lb max (1.55 N)
- 3. Friction**  
Coefficient: 0.2  
Force without side load: < 1 g
- 4. Operating Temperature Range**  
-55°C to +150°C  
If operating at temperatures above +70°C, please advise factory.

**MOUNTING DATA**

- 5. Mounting Hole**  
Rectangular: .312" x .375" or 8 mm x 10 mm  
Round: .375" or 10 mm
- 6. Suggested Mounting Bracket Thickness**  
.060"–.125" (1.52–3.18 mm)
- 7. Mounting Nut Torque**  
Head: 4–8 in-lb (0.45–0.90 Nm)  
Rod End: 1–3 in-lb (0.11–0.34 Nm)
- 8. Stroke**  
Full stroke is obtained with customer held mounting tolerance of ± .015" (0.38 mm).



**Stock Part Description** Fill in the blank boxes at the right with choices from the list below. Example: Model 2KS 56 A 1.5 N F

	MODEL 2KS56
<b>DAMPING DIRECTION</b> TWO-WAY DAMPING DASHPOT .....	<b>A</b>
<b>STROKE</b> .5 – 1.0 – 1.5 – 2.0	
<b>ROD TYPE</b> .058 DIA. S.S. – STANDARD .....	<b>N</b>
<b>ROD END</b> PIN LINK 2-64 THD ..... LOOP WITH .156 ID RULON BUSHING .....	<b>F</b> <b>Y</b> Choose One