

Model  
**2KS95**  
See reverse for custom models selection



**Specifications**

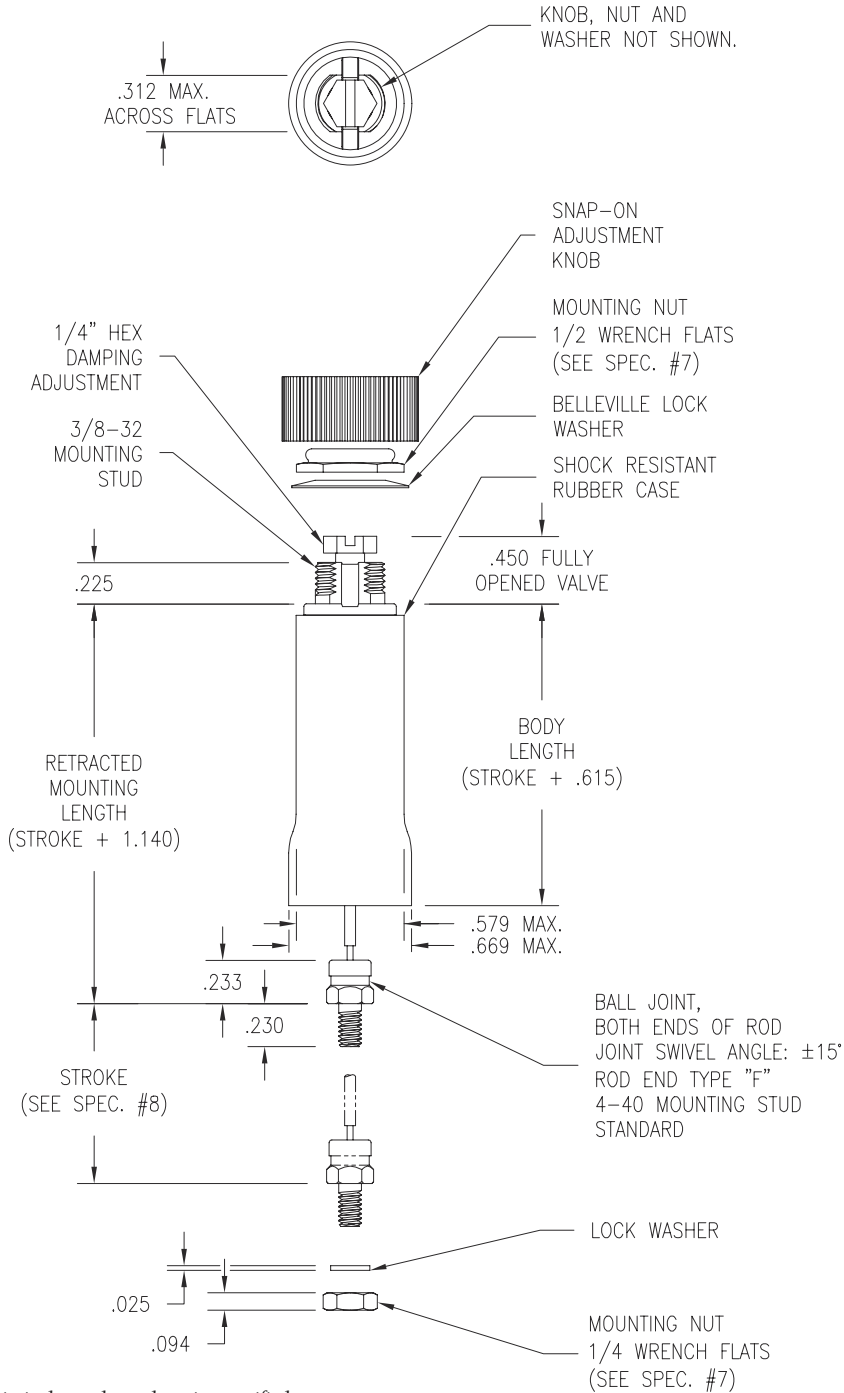
**Bore:** .366" (9.30 mm)

**PERFORMANCE**

- Damping Coefficient**  
0–2.5 lb/(in/s) adjustable  
0–0.44 N/(mm/s)
- Force Guidelines**  
Pull Damping: 1.4 lb max (6.23 N)  
Push Damping: 1.0 lb max (4.45 N)
- Friction**  
Coefficient: 0.2  
Force without side load: < 1 g
- Operating Temperature Range**  
–55°C to +150°C  
If operating at temperatures above +70°C, please advise factory.

**MOUNTING DATA**

- Mounting Hole**  
Rectangular: .312" x .375" or  
8 mm x 10 mm  
Round: .375" or 10 mm
- Suggested Mounting Bracket Thickness**  
.060"–.093" (1.52–2.36 mm)
- Mounting Nut Torque**  
Head: 4–8 in-lb (0.45–0.90 Nm)  
Rod End: 2–5 in-lb (0.23–0.56 Nm)
- Stroke**  
Full stroke is obtained with customer held mounting tolerance of ± .015" (0.38 mm).



**FULL SCALE**  
All dimensions in inches unless otherwise specified

**Stock Part Description** Fill in the blank boxes at the right with choices from the list below. *Example: Model 2KS 95 A 1.5 N F*

		MODEL <b>2KS95</b>
<b>DAMPING DIRECTION</b> TWO-WAY DAMPING DASHPOT..... <b>A</b> PULL DAMPING DASHPOT..... <b>B</b> PUSH DAMPING DASHPOT..... <b>C</b>		Choose One
<b>STROKE</b> .5 – 1.0 – 1.5 – 2.0		
<b>ROD TYPE</b> .058 DIA. S.S. – STANDARD..... <b>N</b>		<b>N</b>
<b>ROD END</b> BALL UNIVERSAL – 4-40 THD ..... <b>F</b> LOOP WITH .156 ID RULON BUSHING ..... <b>Y</b>		Choose One